



**THE CHARITY
GIVING BREAKS
THAT LAST
A LIFETIME**



**New Breaks
in the
Southeast
2026**

**All our
breaks are
fully funded**

**GO BEYOND RESIDENTIAL BREAKS 2026
REFERRAL PROCESS AND CENTRE HIRE**



ASDAN

CEI Chartered Institute of
Educational Assessors
Promoting Excellence in Assessment



Institute for Outdoor Learning

Introduction by Michele Farmer, CEO

Do you know a child that needs a break? Are they silent and withdrawn? Has something changed recently? Go Beyond breaks are proven to work well for children aged 8-13 facing challenges. They might be affected by issues at home such as caring responsibilities, bereavement, poverty or abuse or they simply might be finding the change in year groups/ schools or classes difficult as they grasp with confidence and resilience. If you know a child that for any reason simply needs a break please consider referring them to Go Beyond. All our breaks are **FREE** for the children and young people that are in need. All you need to do is arrange transport to one of our nearest train stations and we will pick them up from there. We know the children and young people that come to us are often nervous but leave with renewed confidence, resilience, trust and friendship.



Maybe you know a whole group that could benefit from a Go Beyond experience and would like to chat to us about hiring one of our centres or co-delivering a break with us. Many Young Carer groups and schools already use our facilities and we help them to design a break that suits their needs. We would love to hear from you. Please find some further information in this brochure or call us on 01822 811020 for more information.

A handwritten signature in black ink.

Could you inspire self-belief in a child you work with?

We accept referrals from any individual working with young people in a professional capacity. Refer today to give them a chance for a positive and inspiring experience.

Go Beyond's expert staff and committed volunteers give children and young people the chance to have the moments and experiences they need to believe in themselves and think beyond the day-to-day for a bigger, brighter future.

We offer fully catered, activity based residential breaks for up to four nights. The quality of our breaks and our embedded Asdan accreditation allows children to attend during term times.

Monday to Friday (5 days and 4 nights)

Refer up to 16 young people

Young people aged 8 to 13 years old

ASDAN Registered Centre, not absent

Referred by a professional who knows them well

Pick up from local railway stations

Delicious home cooked food

No phones or technology

All year round

Secure online referral portal

Our centres in Cornwall and the Peak District are designed with children in mind. Take a look below at where the children sleep and eat, and which areas they enjoy spending time in the most. Our Coastal Centre is in South Cornwall, overlooking the village of Tywardreath and a 15 minute walk to the golden sands of popular Par beach. It is well located for a fun, active, but relaxing break from home worries. Our Daleside Centre is located in over 60 acres of the Peak District National Park and close to areas of natural beauty such as Dovedale. It is an excellent rural haven to unwind and have some fun.



We'll start in the heart of our Centres, the kitchens, where our cooks make home-cooked meals that the children enjoy in family-style dining rooms where chats and jokes are encouraged!

Go Beyond breaks run from two centres, one a 15 minute walk from a Cornish beach, the other nestled in the unspoiled Peak District.

Both centres have Sports Barns with trampolines, giant Jenga, basketball nets, goals and balls. Here, children enjoy free play and team building games to build friendships and confidence. Meanwhile, our Arts and Craft Barns are creative spaces to let imaginations go wild.



At the end of each day, the children sleep in cosy beds in shared rooms that are full of comfy duvets, books and soft toys. Some of the children have never had their own bed before. They love going to sleep at night chatting and giggling.

Inside, our centres have **book corners and chill out rooms** for when children need a quiet moment or to talk in a safe, supportive space. Meanwhile, our large comfortable lounges offer space to relax with board games and movie nights!



Now visit our onsite Toy Shops. Here, we keep hundreds of toys donated by generous companies. At the end of the week children get to visit the 'Toy Shop' and pick what they like!



"Go Beyond is my happy place"

Outside we have orienteering courses, Frisbee golf, kitchen gardens, fire pits and games, plus waterproofs and wellies to get outdoors whatever the weather.



We make sure we measure the impact we have

The Stirling Children's Wellbeing Scale is a questionnaire designed to measure emotional and psychological wellbeing in children and is ideal for measuring the impact of our breaks. The survey consists of 15 questions that aim to provide a holistic view of children's wellbeing. The questions cover a range of topics, including positive emotions, relationships with others, and sense of purpose. The results of the survey provide valuable insights into the emotional and psychological wellbeing of the children who visit us. We are keen to work in partnership with you to maximise the benefits for children. If you refer a child we will share the outcomes with you.

Impact Focus (Stirling Scale questionnaire)
I think good things will happen in my life
I've been able to make choices easily
I can find lots of fun things to do
I feel that I am good at some things
I think lots of people care about me
I think there are many things I can be proud of
I've been feeling calm
I've been in a good mood
I enjoy what each new day brings
I've been feeling relaxed
I enjoy learning new things
I like being outdoors
I don't give up easily
I find it easy to make new friends

Feedback from Children and Referral Agents

Feedback is very important to us, from the children on our breaks to our Referral Agents. Here is what they have said:

"I loved everyone, everything and the whole experience"

"I made a lot of friends"

"I love you Go Beyond!"

"Loved learning different things and swimming"

"I am proud of things I have achieved"

"Making good memories"

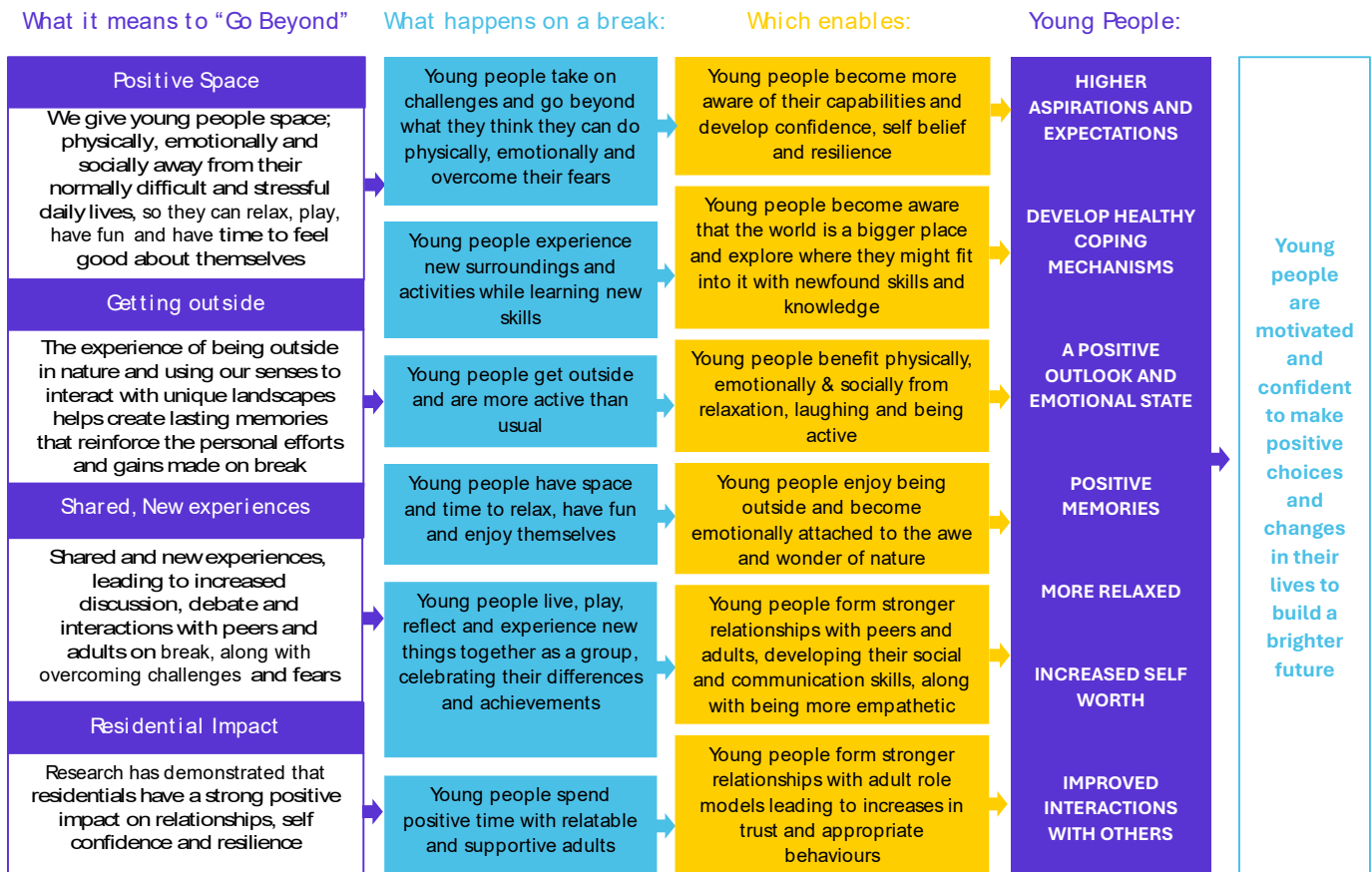
"You do an amazing job for lots of children who require a break from their challenging circumstances"

"The team worked tirelessly, enthusiastically and with skill to provide our pupils with an amazing experience"

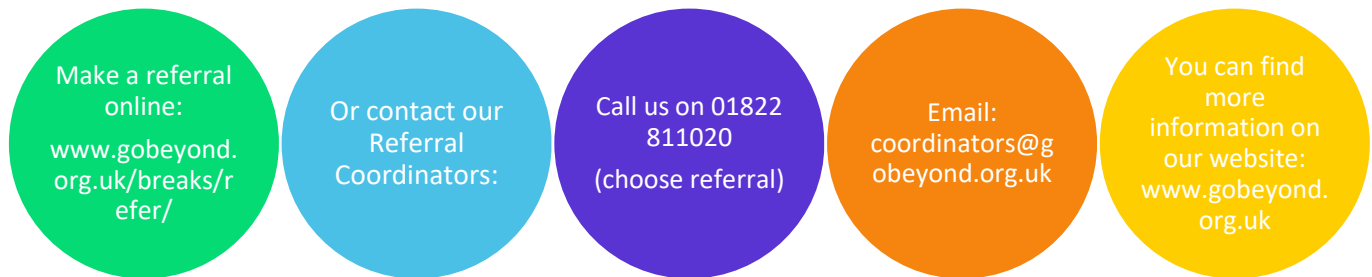
"What the charity is doing is incredible"

"I have been blown away by all of what you offer to the young people"

Go Beyond's Theory of Change



Make a referral today



Go Beyond is a recognized ASDAN center. Children participating in Go Beyond breaks during term time can be marked as present on the school register.

What is ASDAN?

ASDAN (Award Scheme Development and Accreditation Network) is a curriculum development and awarding organisation that offers programmes and qualifications recognising children's skills outside the traditional classroom setting. Since not all children excel in a standard academic curriculum, ASDAN provides an alternative by crediting non-academic skills. This approach has been widely adopted by UK schools. At Go Beyond, we support this development through our breaks, helping children gain valuable skills and experiences.

Benefits for the children

One significant advantage of this accreditation is that children's attendance records remain unaffected when they attend a Go Beyond break during term-time.

While on break, schools can register the children as participating in an off-site educational activity under Category B.

ASDAN acknowledges that children continue to learn in an outdoor environment. The benefits to their academic progress upon returning to school are substantial. Referral Agents have observed that Go Beyond children often return more confident, more willing to participate in class, and better at interacting with their peers, having developed these social skills during their break.



At Go Beyond, our breaks provide children with the chance for **personal development and new experiences** (as recognized by our ASDAN certificate). Children will earn this certificate if the break leaders observe that they have ventured into something new. This could be their first time rock climbing, overcoming fears, spending time away from home, making new friends, or trying different foods. We believe that most children who join us embrace new challenges, push their boundaries, or inspire others to do the same, making these breaks truly special.

Referral Timeline and Checklist

Go Beyond

Identify young people who will benefit from a Go Beyond break	<input checked="" type="checkbox"/>
Register on the Go Beyond online referral system: https://www.gobeyond.org.uk/breaks/refer	<input type="checkbox"/>
Log on and enter the young persons basic details: https://gobeyondbreaks.campmanagement.com/p/campers/login_m.php	<input type="checkbox"/>
Complete the young persons referral forms	<input type="checkbox"/>
Discuss the young person with our Referral Coordinators (consider special requests, rooming, diets, medication)	<input type="checkbox"/>
Agree that the young people are suitable for a break with us	<input type="checkbox"/>
Agree a date for the young people's break*	<input type="checkbox"/>
Download the Parent Consent and Medical form and share with parents/guardians. Upload the completed form to our system	<input type="checkbox"/>
Complete the transport form for each young person and agree local arrangements	<input type="checkbox"/>
Complete the Pre-Break Monitoring form for each young person	<input type="checkbox"/>
Young people attend their break	<input type="checkbox"/>
Go Beyond sends the young peoples break evaluation reports	<input type="checkbox"/>
Please complete the Post-Break Monitoring form for each young person	<input type="checkbox"/>
Please complete the Referral Feedback form	<input type="checkbox"/>

*If you wish to agree a date for a group booking in at the start of the process, that is fine.

Organisation/School

Download and share the Go Beyond Due Diligence pack with your Visits Coordinator	<input checked="" type="checkbox"/>
Get Management/School approval for the visit	<input type="checkbox"/>
Staffing/supervision arrangements: who/when/why? All visiting staff should register on our online system for volunteers and complete the Visiting/Accompanying Staff Form in the Forms area. https://www.gobeyond.org.uk/apply-to-become-a-break-volunteer/	<input type="checkbox"/>
<ul style="list-style-type: none"> Enter onto your visits approval system: eVisit, Evolve etc. (We are not listed so an "External Provider form should be needed) Complete any further forms SOE5 External Provider forms (on our system, but might need local LEA/MAT version) Get approval 	<input type="checkbox"/>
Download and share the Go Beyond Parent's Guide to our breaks with parents and guardians	<input type="checkbox"/>
Gain own parental approval for the visit	<input type="checkbox"/>
Transport arrangements: book/times/pick up/drop off	<input type="checkbox"/>
Download and share the Break Confirmation to parents with transport and contact password details	<input type="checkbox"/>

Availability for 2026 at our Coastal Centre In Cornwall

January								February								March							
Wk	Mo	Tu	We	Th	Fr	Sa	Su	Wk	Mo	Tu	We	Th	Fr	Sa	Su	Wk	Mo	Tu	We	Th	Fr	Sa	Su
1	29	30	31	1	2	3	4	5							1	9							1
2	5	6	7	8	9	10	11	6	2	3	4	5	6	7	8	10	2	3	4	5	6	7	8
3	12	13	14	15	16	17	18	7	9	10	11	12	13	14	15	11	9	10	11	12	13	14	15
4	19	20	21	22	23	24	25	8	16	17	18	19	20	21	22	12	16	17	18	19	20	21	22
5	26	27	28	29	30	31		9	23	24	25	26	27	28		13	23	24	25	26	27	28	29
																14	30	31					

April								May								June							
Wk	Mo	Tu	We	Th	Fr	Sa	Su	Wk	Mo	Tu	We	Th	Fr	Sa	Su	Wk	Mo	Tu	We	Th	Fr	Sa	Su
14			1	2	3	4	5	18					1	2	3	23	1	2	3	4	5	6	7
15	6	7	8	9	10	11	12	19	4	5	6	7	8	9	10	24	8	9	10	11	12	13	14
16	13	14	15	16	17	18	19	20	11	12	13	14	15	16	17	25	15	16	17	18	19	20	21
17	20	21	22	23	24	25	26	21	18	19	20	21	22	23	24	26	22	23	24	25	26	27	28
18	27	28	29	30				22	25	26	27	28	29	30	31	27	29	30					

July								August								September							
Wk	Mo	Tu	We	Th	Fr	Sa	Su	Wk	Mo	Tu	We	Th	Fr	Sa	Su	Wk	Mo	Tu	We	Th	Fr	Sa	Su
27			1	2	3	4	5	31						1	2	36		1	2	3	4	5	6
28	6	7	8	9	10	11	12	32	3	4	5	6	7	8	9	37	7	8	9	10	11	12	13
29	13	14	15	16	17	18	19	33	10	11	12	13	14	15	16	38	14	15	16	17	18	19	20
30	20	21	22	23	24	25	26	34	17	18	19	20	21	22	23	39	21	22	23	24	25	26	27
31	27	28	29	30	31			35	24	25	26	27	28	29	30	40	28	29	30				
								36	31														

October								November								December							
Wk	Mo	Tu	We	Th	Fr	Sa	Su	Wk	Mo	Tu	We	Th	Fr	Sa	Su	Wk	Mo	Tu	We	Th	Fr	Sa	Su
40				1	2	3	4	44							1	49		1	2	3	4	5	6
41	5	6	7	8	9	10	11	45	2	3	4	5	6	7	8	50	7	8	9	10	11	12	13
42	12	13	14	15	16	17	18	46	9	10	11	12	13	14	15	51	14	15	16	17	18	19	20
43	19	20	21	22	23	24	25	47	16	17	18	19	20	21	22	52	21	22	23	24	25	26	27
44	26	27	28	29	30	31		48	23	24	25	26	27	28	29	53	28	29	30	31	1	2	3
								49	30														

CENTRE AVAILABILITY

Residential week (4 nights)

Residential week (3 nights)

Residential week (flexible 1 – 3 night taster breaks available).
Day only breaks may be available

Not available

Possible Centre for rental

BANK HOLIDAYS

01-Jan New Years Day
03-Apr Good Friday
06-Apr Easter Monday
04-May Early May Bank Holiday
25-May Spring Bank Holiday
31-Aug Summer Bank Holiday
25-Dec Christmas Day
28-Dec Boxing Day

KEY INFORMATION

The Coastal Centre, Barn Park Farm,
Well Street, Tywardreath, Cornwall,
PL24 2QN

www.gobeyond.org.uk

Residential Break Referrals

Call Allison Harris
on 01822 811020

Centre Hire

Call Sharon Retaillick
on 07936 439593

Availability for 2026 at our Daleside Centre in Derbyshire

January								February								March							
Wk	Mo	Tu	We	Th	Fr	Sa	Su	Wk	Mo	Tu	We	Th	Fr	Sa	Su	Wk	Mo	Tu	We	Th	Fr	Sa	Su
1	29	30	31	1	2	3	4	5							1	9							1
2	5	6	7	8	9	10	11	6	2	3	4	5	6	7	8	10	2	3	4	5	6	7	8
3	12	13	14	15	16	17	18	7	9	10	11	12	13	14	15	11	9	10	11	12	13	14	15
4	19	20	21	22	23	24	25	8	16	17	18	19	20	21	22	12	16	17	18	19	20	21	22
5	26	27	28	29	30	31		9	23	24	25	26	27	28		13	23	24	25	26	27	28	29
																14	30	31					

April								May								June							
Wk	Mo	Tu	We	Th	Fr	Sa	Su	Wk	Mo	Tu	We	Th	Fr	Sa	Su	Wk	Mo	Tu	We	Th	Fr	Sa	Su
14			1	2	3	4	5	18					1	2	3	23	1	2	3	4	5	6	7
15	6	7	8	9	10	11	12	19	4	5	6	7	8	9	10	24	8	9	10	11	12	13	14
16	13	14	15	16	17	18	19	20	11	12	13	14	15	16	17	25	15	16	17	18	19	20	21
17	20	21	22	23	24	25	26	21	18	19	20	21	22	23	24	26	22	23	24	25	26	27	28
18	27	28	29	30				22	25	26	27	28	29	30	31	27	29	30					

July								August								September							
Wk	Mo	Tu	We	Th	Fr	Sa	Su	Wk	Mo	Tu	We	Th	Fr	Sa	Su	Wk	Mo	Tu	We	Th	Fr	Sa	Su
27			1	2	3	4	5	31						1	2	36		1	2	3	4	5	6
28	6	7	8	9	10	11	12	32	3	4	5	6	7	8	9	37	7	8	9	10	11	12	13
29	13	14	15	16	17	18	19	33	10	11	12	13	14	15	16	38	14	15	16	17	18	19	20
30	20	21	22	23	24	25	26	34	17	18	19	20	21	22	23	39	21	22	23	24	25	26	27
31	27	28	29	30	31			35	24	25	26	27	28	29	30	40	28	29	30				
								36	31														

October								November								December							
Wk	Mo	Tu	We	Th	Fr	Sa	Su	Wk	Mo	Tu	We	Th	Fr	Sa	Su	Wk	Mo	Tu	We	Th	Fr	Sa	Su
40				1	2	3	4	44							1	49		1	2	3	4	5	6
41	5	6	7	8	9	10	11	45	2	3	4	5	6	7	8	50	7	8	9	10	11	12	13
42	12	13	14	15	16	17	18	46	9	10	11	12	13	14	15	51	14	15	16	17	18	19	20
43	19	20	21	22	23	24	25	47	16	17	18	19	20	21	22	52	21	22	23	24	25	26	27
44	26	27	28	29	30	31		48	23	24	25	26	27	28	29	53	28	29	30	31	1	2	3
								49	30														

CENTRE AVAILABILITY

Residential week (4 nights)

Residential week (3 nights)

Residential week (flexible 1 – 3 night taster breaks available). Day only breaks may be available

Not available

Possible Centre for rental

BANK HOLIDAYS

01-Jan New Years Day
 03-Apr Good Friday
 06-Apr Easter Monday
 04-May Early May Bank Holiday
 25-May Spring Bank Holiday
 31-Aug Summer Bank Holiday
 25-Dec Christmas Day
 28-Dec Boxing Day

KEY INFORMATION

The Daleside Centre, Ravenscliffe Farm, Ashbourne, Derbyshire, DE6 1LF

www.gobeyond.org.uk

Residential Break Referrals

Call Lesley Andreassen on 01822 811020

Centre Hire

Call Caren Keeling on 07475 172772



New for 2026: Go Beyond is bringing breaks to children in the South East

In 2026 we will be reaching even more vulnerable young children, through our new partnership with Cardfields in Essex. We will be trialling 'Pop Up' breaks over 6 weeks and bringing Go Beyond directly to children from London's most disadvantaged communities, where

thousands are missing out on safe spaces, green places and the simple joys of childhood.



One in three children in London are growing up in poverty

We believe every child who faces serious challenges in their lives deserves a break. That's why we are on a mission to break down barriers for London's most vulnerable young people.

Our first step is a new partnership with Cardfields, a beautiful outdoor centre in Essex just an hour from London. Our ambition is bring the Go Beyond experience closer to children in the South East, enabling more to benefit from a break. We plan to use this partnership model as a blueprint for further pop ups close to other disadvantaged communities across the UK

If you would like to find out more about our breaks in the South East or refer a child please visit [Go Beyond in the South East](#)

2026 Breaks Programme: Cardfields Centre																							
April							May							June									
Wk	Mo	Tu	We	Th	Fr	Sa	Su	Wk	Mo	Tu	We	Th	Fr	Sa	Su	Wk	Mo	Tu	We	Th	Fr	Sa	Su
14	30	31	1	2	3	4	5	18					1	2	3	23	1	2	3	4	5	6	7
15	6	7	8	9	10	11	12	19	4	5	6	7	8	9	10	24	8	9	10	11	12	13	14
16	13	14	15	16	17	18	19	20	11	12	13	14	15	16	17	25	15	16	17	18	19	20	21
17	20	21	22	23	24	25	26	21	18	19	20	21	22	23	24	26	22	23	24	25	26	27	28
18	27	28	29	30				22	25	26	27	28	29	30	31	27	29	30					
																14							
July							August							September									
Wk	Mo	Tu	We	Th	Fr	Sa	Su	Wk	Mo	Tu	We	Th	Fr	Sa	Su	Wk	Mo	Tu	We	Th	Fr	Sa	Su
27			1	2	3	4	5	31						1	2	36		1	2	3	4	5	6
28	6	7	8	9	10	11	12	32	3	4	5	6	7	8	9	37	7	8	9	10	11	12	13
29	13	14	15	16	17	18	19	33	10	11	12	13	14	15	16	38	14	15	16	17	18	19	20
30	20	21	22	23	24	25	26	34	17	18	19	20	21	22	23	39	21	22	23	24	25	26	27
31	27	28	29	30	31			35	24	25	26	27	28	29	30	40	28	29	30				
								36	31														
October							November							December									
Wk	Mo	Tu	We	Th	Fr	Sa	Su	Wk	Mo	Tu	We	Th	Fr	Sa	Su	Wk	Mo	Tu	We	Th	Fr	Sa	Su
40				1	2	3	4	44							1	49		1	2	3	4	5	6
41	5	6	7	8	9	10	11	45	2	3	4	5	6	7	8	50	7	8	9	10	11	12	13
42	12	13	14	15	16	17	18	46	9	10	11	12	13	14	15	51	14	15	16	17	18	19	20
43	19	20	21	22	23	24	25	47	16	17	18	19	20	21	22	52	21	22	23	24	25	26	27
44	26	27	28	29	30	31		48	23	24	25	26	27	28	29	53	28	29	30	31	1	2	3
								49	30														

Coastal and Daleside Centre Hire Price List 2026

Our Centres are available to hire by organisations, charities and schools that would like to organise their own breaks. We are always on hand to help with planning and delivery.



Main house Rental prices	1 day 1 night	2 days 1 night	3 days 2 nights	4 days 3 nights	5 days 4 nights
Daytime use only 8.30am – 5.00pm	£200.00	£350.00	£450.00	£550.00	£650.00
Daytime and residential use		£520.00	£680.00	£850.00	£1,000.00

The above provides no catering but includes bedding, towels, all centre fuel costs and access to our catering facilities for your group use. We are very happy to discuss a bespoke mix of the above to suit your needs.

Add on options are outlined below, priced depending on need:

Catering options: refreshments, packed lunches, half board and full board

Activity options: half day and full day (soft archery, orienteering, team challenges)

Transport options: pick ups and activity transport



Daleside Centre
 Ravenscliffe Farm, Ashbourne, Derbyshire
 DE6 1LF
 • Call Caren on 07475 172772
 • Or Email
 • carenkeeling@gobeyond.org.uk



Coastal Centre
 Barn Park Farm, Well Street,
 Tywardreath, Cornwall PL24 2QN
 • Call Sharon on 07936439593
 • Or email:
 • sharonretallick@gobeyond.org.uk

Refer a young person for a break



Find out more



**All our breaks
are fully funded**

We accept referrals from any individual working with young people in a professional capacity. Could you inspire self-belief in a child you work with?